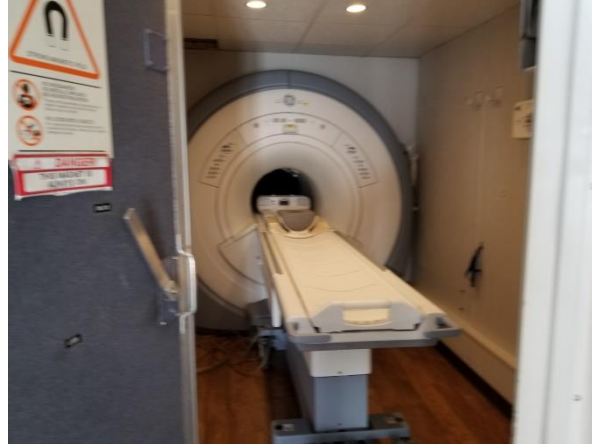


**GE 2008 15X 8 Channel CXK4 magnet \* 1998 E&W 102” Trailer up graded in 2017**



**Superior Medical Imaging: 2008 15X 8 Channel Mobile GE Signa HDx 1.5T MRI**

**Software options:** EPI, FGE, CINE, FSE & FLAIR, TOF, PC & VI, SGD, EchoSpeed, DW EPI, FLAIR EPI Special, SmartPrep, SSFSE, 3 Plane Loc, Modality Worklist, E3DTOF, FSE\_XL, Bloodsupp Fastcine, SGPerf, iDrive, iDrive pro, SmartPrep 2000 Up, Functool 2, Voxtool, IVI, Clariview PPS, iDrive Pro Plus, Ultrashort TR, T1 & T2 Breathhold, SSFSE MRCP, MRCP3, ACGD Plus, Flouro Trig MRA, Dynamic R1, Fiesta 2D, Fiesta 3D, Asset, 3D FRFSE, Asset Plus, FIESTA-c 3D Fat Sat Fiesta, 2D Fat Sat Fiesta, 8 ch Sys, Lava, Multi-Phase Variable Delay, Blood Flow and Volume Measurement, 2D Merge BRAVO, HDx Key, 3D Dual Echo ARC

**Coils Include:** 8ch CTL Array, 8ch Hi Res Brain, 8ch Body Array, Shoulder coil, Quad Knee/Foot coil, Quad Head Split, BRM-D Body assembly, GP flex coil

**Injector Included.** Solaris Dual Head Injector upon request

**Superior Medical Imaging** will not be responsible for any licensing agreements/transferring of OEM software, non-transferable software or missing manuals originally sent with the system (**applies to outright purchases only**)

**Available approximately Mid to end May, 2018 Serious Inquires only** This system is fully functional  
**Serviced by independent company**

**As is where \$515,000.00 Note: All sales are final. "Pending inspection" Excluding painting or any repairs!!**

**Location:** West cost

**Superior Medical Imaging**  
**shannon@superiormedicalimaging.com**