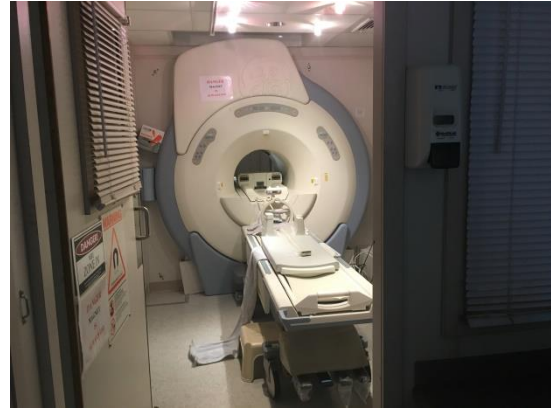


Superior Medical Imaging Services

2006 GE 1.5T 12X HD Rental Mobile MRI NOW Available!!



Equipment Included:

SYSTEMS: • ACGD Gradient cabinet with shared PDU • Analogic RF Amplifier cabinet • Systems Cabinet; exciter, communications, CPU, power supplies, etc. • HP Computer workstation, monitor, etc.

Magnet CXK4 LCC w/Subsystems; Patient table, Magnet Monitor, Sumitomo compressor & coldhead, lines, Current Helium Level: 72.31% @ 0.966psi: Medrad Spectris Contrast Dye Injector system w/arm and control station

User Manuals: Coils, Equipment, maintenance, trailer, options, Options MO disks, operating system software, Host ID- Patient stairway, hand rails & platform, patient lift, Main power cable to trailer, Patient positioning pads (black wall-mount box & other misc. Pads in cabinets, 2x operator workstation chairs.

COILS: 1. USA instruments CTL w/ CTL Adapter Block ° CTL Anterior Bridge, 8 Channel High Resolution Brain Array (receive only) 3. 8 Channel Body Array coil, 8 Channel "Liberty 9000" HD Breast Array Coil w/ Breast coil face rest assembly, Split Head Coil assembly, Medrad extremity coil, Large Shoulder Array, Small Shoulder Array, 1 General Purpose Flex Coil, 2 General Purpose Flex Coil, Main Body Coil - Phantoms for coils, LV shim, body SNR, head SNR,

Superior Medical MRI Rental program will provide solutions for customers who have unique needs and situations that hinder or delay the tough decision to add an MRI system to their facility. For those customers, our MRI Rental Program alleviates the concerns and obstacles surrounding their decisions. We offer mobile MRI equipment to fit your budget and professional needs for exams. These Rental systems are delivered to your facility and will have your medical imaging program up-and-running quickly. It will provide a temporary solution when an MRI system is having technical issues, construction delays, or other unfortunate situations. A Rental also provides an easy and economical solution for research studies or short-term portable MRI programs.

Superior Medical Provides excellent Service and Proactive Maintenance to our Clients.

Call for more Information: Phone: 951-847-0967

Superior Medical Imaging Services

Shannon@SuperiorMedicalImaging.com